

RECEIVED
LARAMIE COUNTY
CERTIFIED LAND CORNER RECORDATION CHEYENNE, WY.

DESCRIPTION OF CORNER EVIDENCE FOUND, AND ORIGINAL RECORD (If known) 388-011-380 APR 8 09

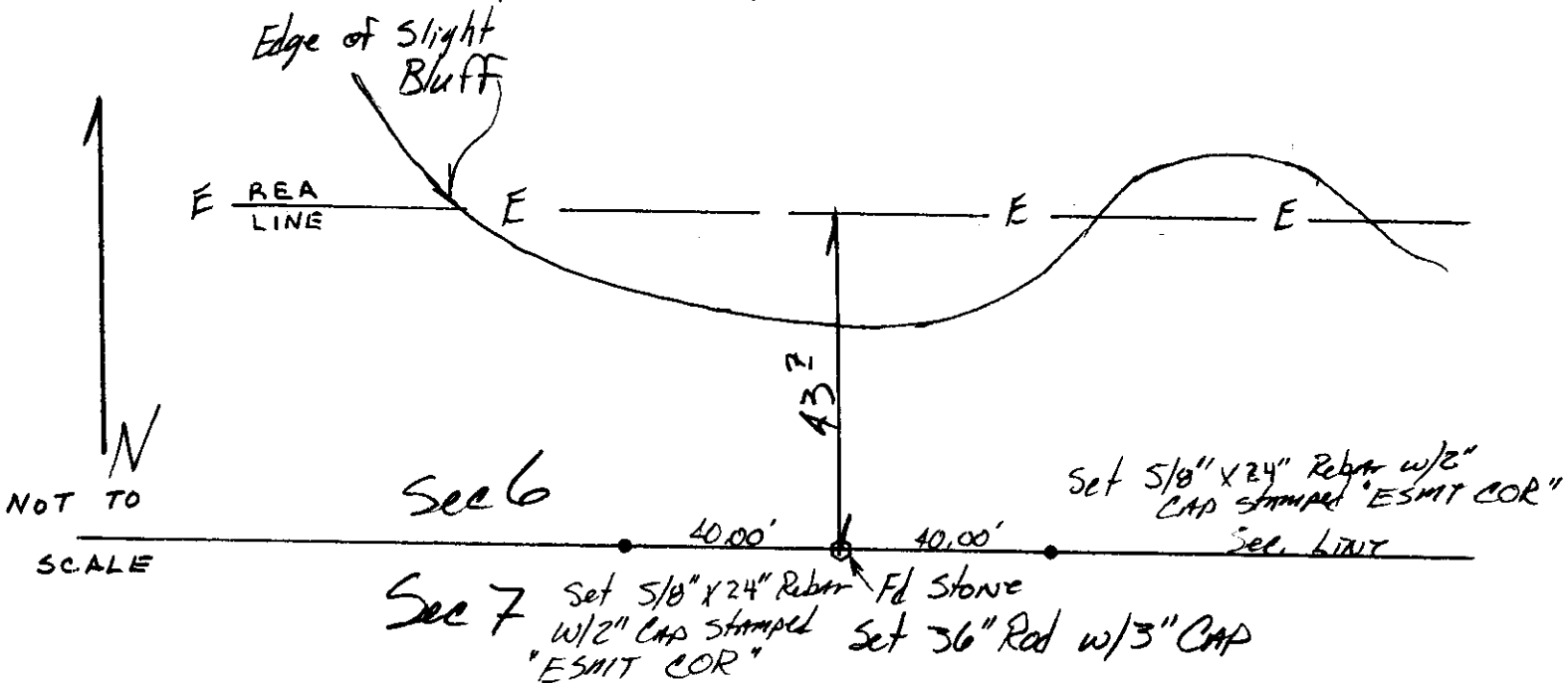
1/4 COR.
Sec. 6
Sec. 7
T 13 N, R 64 W

Found: Pink granite stone, 4" x 8" x 14", fallen over probably to the south, "1/4" chiseled clearly on upper face.
Accessories found - None
GLO: "Set a granite boulder 19" x 8" x 5" for quarter section corner."

DESCRIPTION OF MONUMENT AND ACCESSORIES ESTABLISHED TO PERPETUATE THE ORIGINAL LOCATION OF THIS CORNER:

Set: *Set 36" aluminum driveable monument with 3" aluminum cap, about 0.5 foot below surface. See Map of Survey filed with Laramie County Clerk for dimensions to adjacent corners.
Set 2-5/8"x24" rebar with 2" cap stamped "ESMT COR" one each 40.00' east and west of the 1/4 corner on the section line.

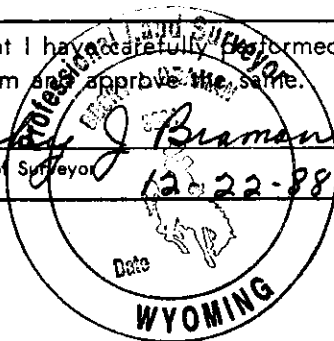
SKETCH, WITH COURSE AND DISTANCE TO ADJACENT CORNER IF DETERMINED IN THIS SURVEY.
(May Sketch or Paste Reproduction on Reverse Side.)



I, BECKY J. BRAMAN certify that I have carefully performed or reviewed the work done on the diagrammed corner as reported on this recordation form and approve the same.

*DUE TO ROAD CONSTRUCTION, DRIVEABLE MON. HAS NOT YET BEEN SET. IT WILL BE SET BY 6-30-89.

Becky J. Braman PLS 3881
Signature of Surveyor Registration No.
Date 12-22-88



STATE OF WYOMING,
Office of Clerk and Recorder,
County of LARAMIE

This "corner record" was filed for record on the _____ day of _____, 19____, was noted on the cross-index plat and is assigned page No. _____, in book No. _____.

County Official

Cross Index No. <u>E3</u>	T. <u>13N</u>	R. <u>64W 6th</u>	Mer.
_____	T. _____	R. _____	Mer.
_____	T. _____	R. _____	Mer.
_____	T. _____	R. _____	Mer.
_____	T. _____	R. _____	Mer.
_____	T. _____	R. _____	Mer.
_____	T. _____	R. _____	Mer.